

Intelligent Intersections for Road Safety

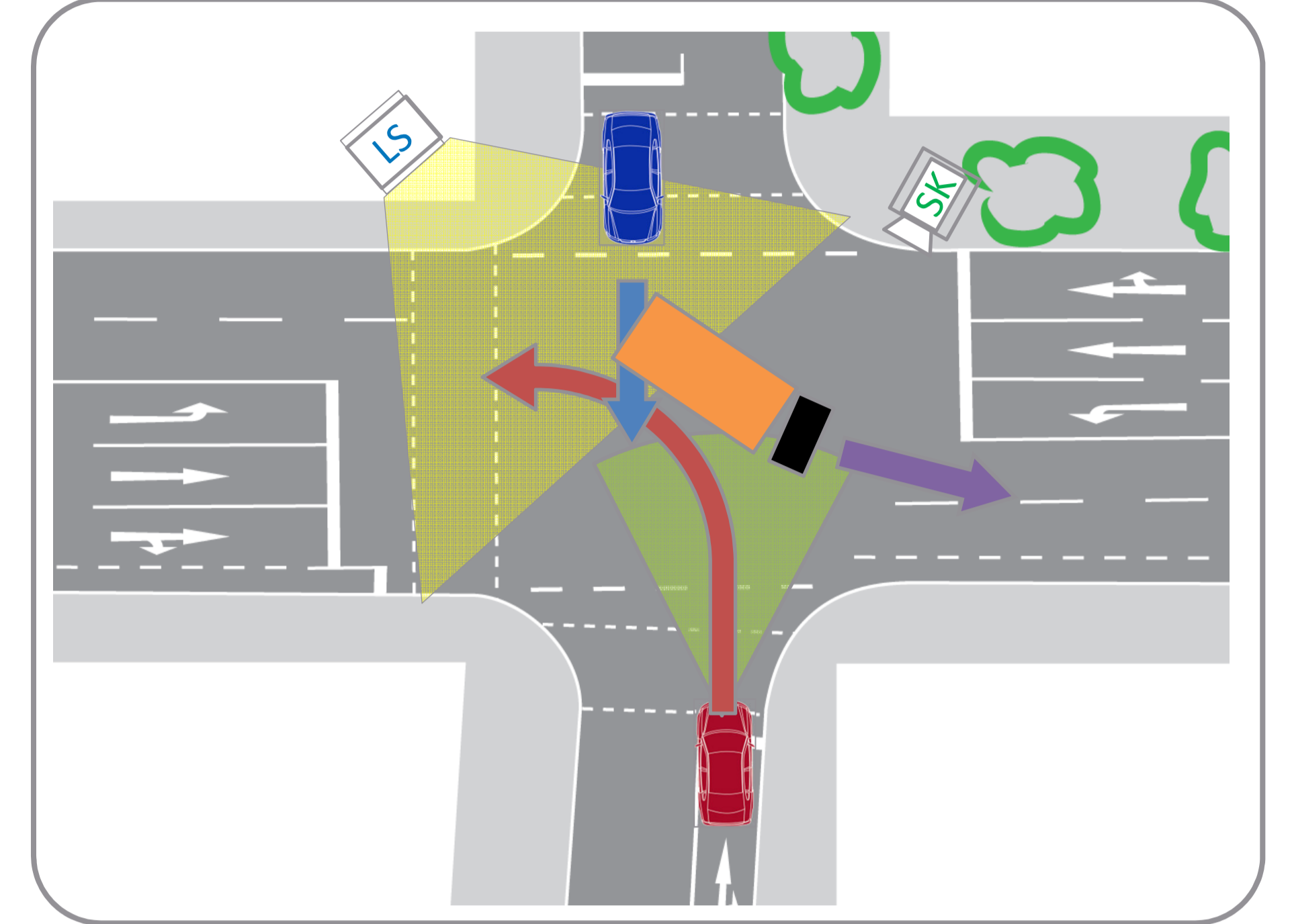
Motivation

Challenges

- High traffic density and complex driving situations are challenging for the driver and the vehicle's perception system.
- Occlusions reduce the driver's and sensors' field of perception.

Ko-PER

- No occlusions due to intersection sensors
- Recognition of road users using complementary sensors
- Wireless communication of perceived dynamic objects



Perception System

