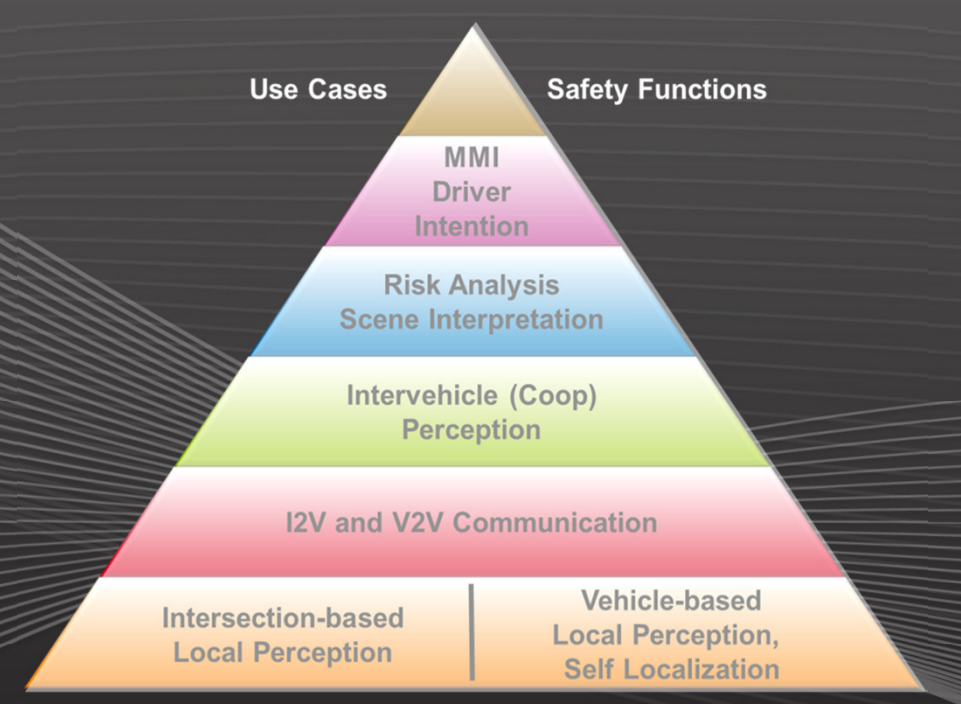


Safety Functions to be Demonstrated Today



Ko-PER Assistance: Objectives

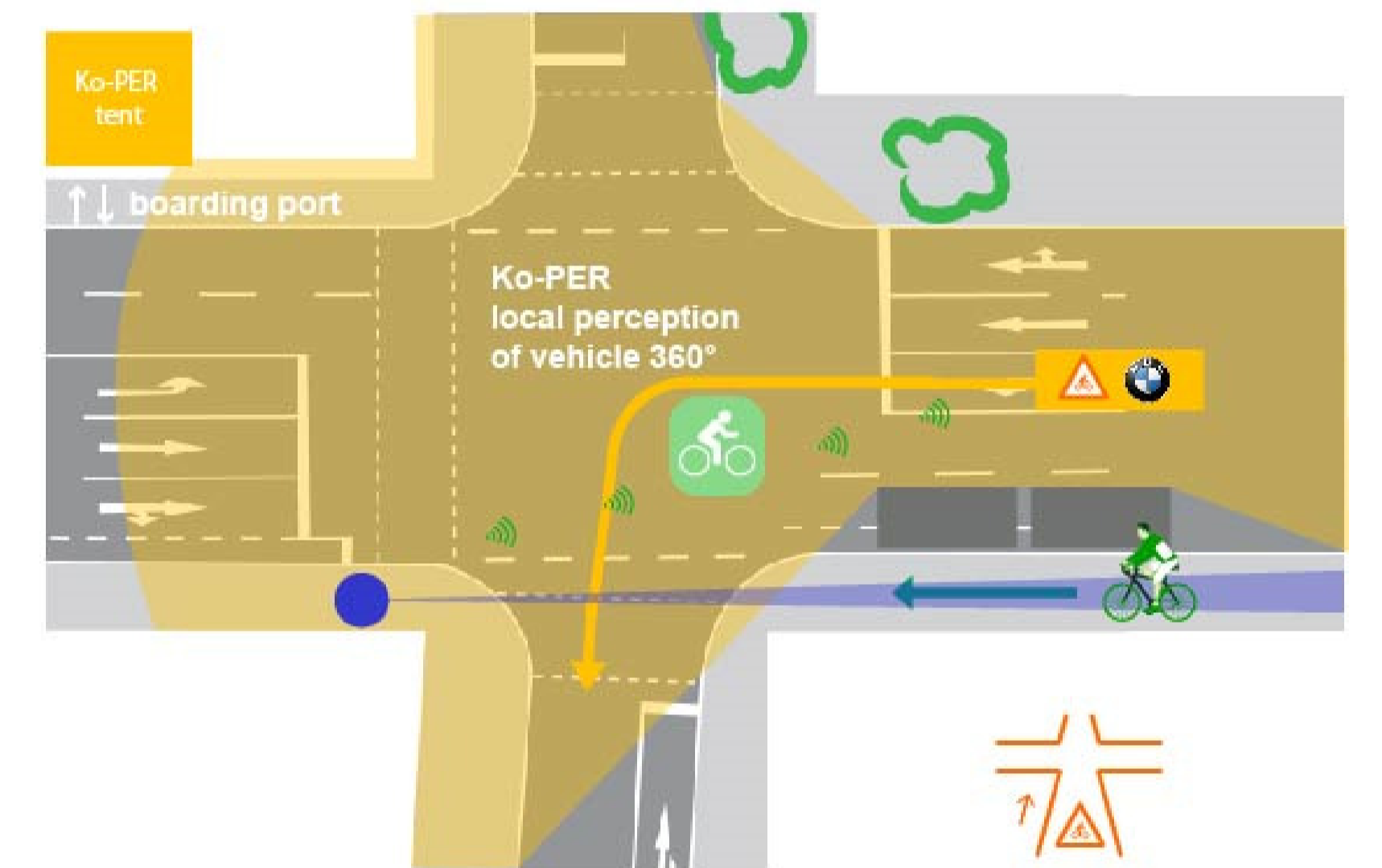
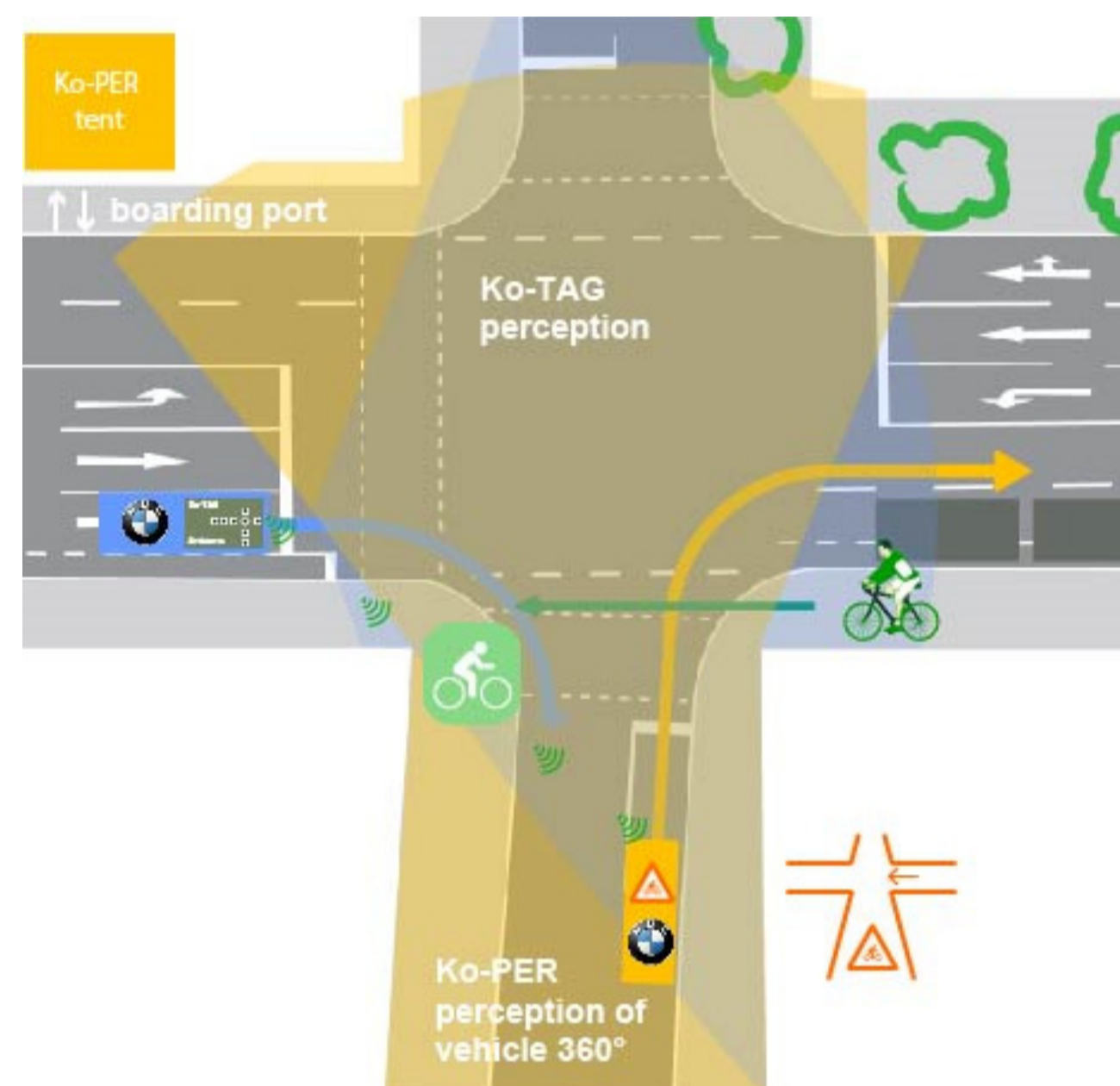
- Improve preventive road safety
- Capture a virtually complete picture of the local traffic environment
- Resolve occlusions

BMW (Ko-PER) & BMW (Ko-TAG)

V2V cooperative vulnerable road user safety in longitudinal traffic

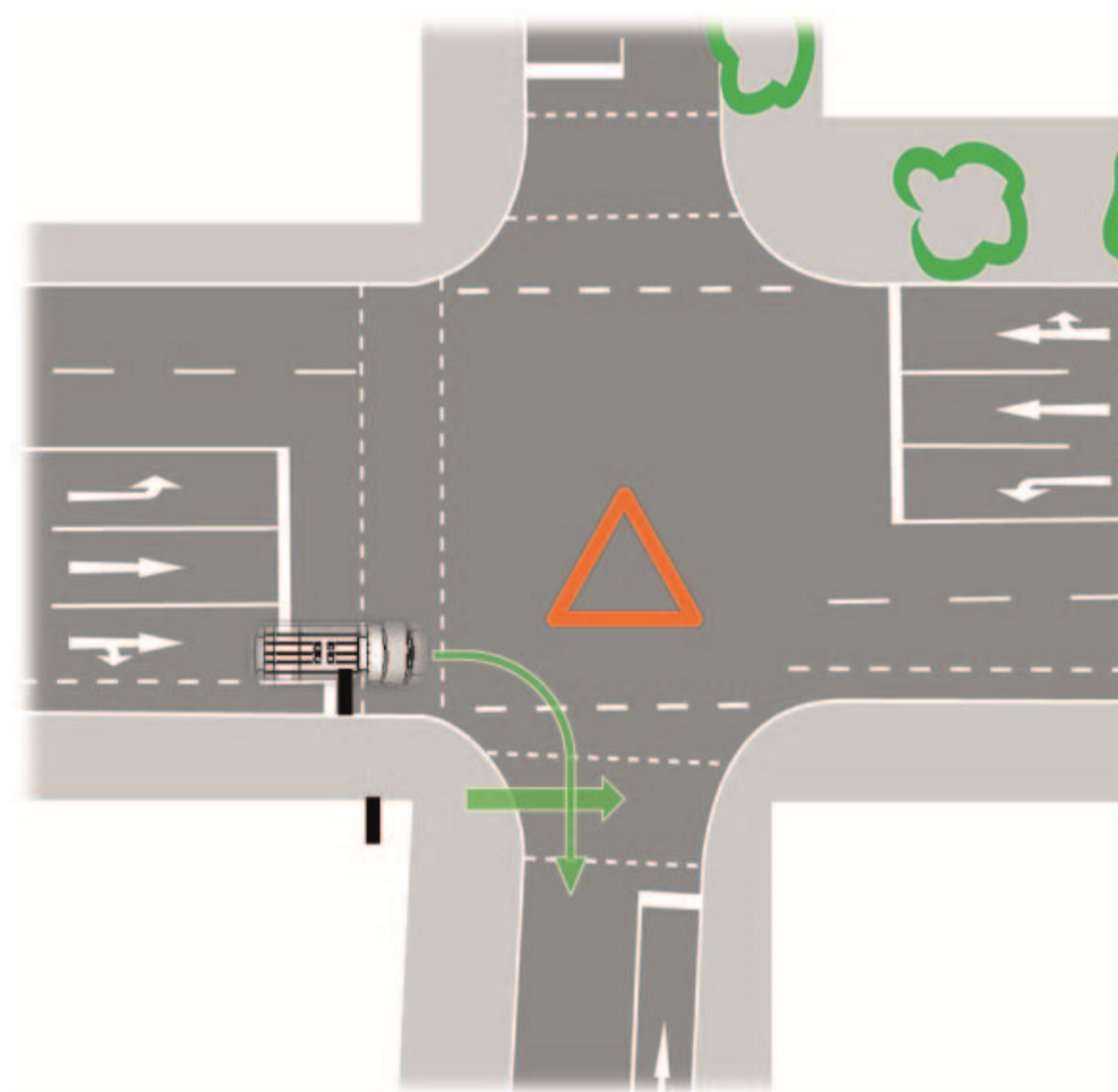


V2V cooperative vulnerable road user safety at intersections



CSEI & HSA

I2V cooperative vulnerable road user safety at intersections



DAIMLER, Delphi, driveU

Intention recognition and risk assessment based on V2X communication and cooperative perception for:

Left-turn and crossing across path situations with occlusion

